

PERFORMANCE

Processor

Intel® Core™ i7-12700, 12C (8P + 4E) / 20T, P-core 2.1 / 4.8GHz, E-core 1.6 / 3.6GHz, 25MB

Graphics

Integrated Intel UHD Graphics 770

Chipset

Intel B660 Chipset

Memory

1x 8GB UDIMM DDR4-3200

Memory Slots

Two DDR4 UDIMM slots, dual-channel capable

Max Memory

Up to 64GB DDR4-3200

Storage

256GB SSD M.2 2280 PCIe® 4.0x4 NVMe® Opal 2.0

Optane™ Memory

None

Storage Support

Up to two drives, 1x 2.5"/3.5" HDD + 1x M.2 SSD

- 2.5" HDD up to 1TB
- 3.5" HDD up to 2TB
- M.2 SSD up to 1TB

Card Reader

None

Optical

DVD

Audio Chip

High Definition (HD) Audio, Realtek® ALC623-CG codec

Speakers

1Wx1

Power Supply

260W 90%

DESIGN

Keyboard

USB Calliope Keyboard, Black, Spanish (LA)

Mouse

USB Calliope Mouse, Black

Expansion Slots

- One PCIe 3.0 x1, low-profile (length < 167.65mm, height < 68.90mm)
- One PCIe 4.0 x16, low-profile (length < 167.65mm, height < 68.90mm)
- Two M.2 slots (one for WLAN, one for SSD)

Case Color

Black

Stand

None

Form Factor

SFF (7.4L)

Dimensions (WxDxH)

100 x 308 x 274.8 mm (3.9 x 12.1 x 10.8 inches)

Weight

Around 4.5 kg (9.9 lbs)

CONNECTIVITY

Ethernet

Integrated 100/1000M

WLAN + Bluetooth®

Intel AX201, 11ax 2x2 + BT5.1

Front Ports

- 2x USB 3.2 Gen 1
- 1x USB-C® 3.2 Gen 1 (support data transfer and 5V@3A charging)
- 1x headphone / microphone combo jack (3.5mm)
- 1x microphone (3.5mm)

Rear Ports

- 1x HDMI® 2.1 TMDS
- 1x DisplayPort™ 1.4
- 1x VGA
- 2x USB 2.0
- 2x USB 3.2 Gen 1 (one supports Smart Power On)
- 1x Ethernet (RJ-45)
- 1x line-out (3.5mm)

Optional Rear Ports (configured)

1x Serial

Monitor Cable

None

SECURITY & PRIVACY

Security Chip

Discrete TPM 2.0, TCG certified

Fingerprint Reader

No fingerprint reader

Physical Locks

- Kensington® Security Slot™, 3 x 7 mm
- Padlock Loop

Kensington Cable Lock

None

Smart Cable Clip

None

Chassis Intrusion Switch

None

SERVICE

Base Warranty

1-year, Onsite

Included Upgrade

3Y Onsite upgrade from 1Y Onsite (5WS0D80967)

CERTIFICATIONS

Green Certifications

- ErP Lot 3
- TCO Certified 9.0
- RoHS compliant

SOFTWARE

Operating System

Windows® 11 DG Windows 10 Pro 64, Spanish

Bundled Software

None

MODEL

TopSeller	: No	Announce Date	: 2022-07-22
EAN / UPC / JAN	: None	End of Support	: N/A



Premier Support - A direct 24x7x365 line to our most elite technicians.



Advanced technical support, 24x7x365, in more than 100 markets



Technical Account Managers for proactive relationship and escalation management



Comprehensive hardware & OEM software support



Priority on service delivery and repair parts



Single point of contact for simplified end-to-end case management



Lenovo Service Connect Portal for customized reporting and product support

Accidental Damage Protection - Protection of your PC from the unexpected.

Experience shows that a significant portion of devices may be damaged (and not covered under warranty) in the first three years. Lenovo's Accidental Damage Protection service covers accidents beyond the system warranty such as drops, spills, bumps and even electrical surges. Make sure your new device has maximum protection, avoid unplanned costs and get peace of mind.

Base Warranty - Included with the systems you purchase, default 1- or 3-year coverage window.

Warranty Extensions & Upgrades - Service and protection that's right for your circumstances.

- Pick Up & Return Courier
- Onsite Support
- Technician Installed Customer
- Replaceable Unit Service
- International Warranty Upgrade

Lenovo may not offer the products, services or features discussed in this document in all regions. Lenovo may withdraw an offering at any time. Information is subject to change without notice. Consult your local representative for information on offerings available in your area. Lenovo reserves the right to change specifications or other product information without notice. Lenovo is not responsible for photographic or typographical errors. Lenovo provides this publication "as is" without warranty of any kind, either express or implied, including the implied warranties of merchantability or fitness for a particular purpose.

Recommended Accessories



Kensington MicroSaver 2.0 Cable Lock from Lenovo

4XEON80914

Protect your device. Lenovo offers the latest standard in device security – the MicroSaver 2.0 Cable Lock From Lenovo. Engineered to be the smallest, strongest lock for laptops and other devices, the MicroSaver 2.0 re...

Recommended Services

BEST	5Y Premier Support Plus upgrade from 3Y Onsite (5WS1L39056)
BETTER	3Y Premier Support Plus upgrade from 3Y Onsite (5WS1L39468)
GOOD	3Y Premier Support Upgrade from 3Y Onsite (5WS0U26647)

For a full list of accessories and services, please visit:
<https://smartfind.Lenovo.com>

Lenovo

PSREF
Product Specifications
Reference

PERFORMANCE

Display Size	21.45"
View Area	478.6x260.2 mm
Panel	VA
Aspect Ratio	16:9
Resolution	1920x1080
Pixel Pitch	0.2490x0.2410 mm
Dot / Pixel Per Inch	103 dpi
View Angle (H / V)	178 / 178
Response Time	4 ms (Extreme mode) / 6 ms (Typical mode)
Color Support	16.7 Million
Refresh Rate	75 Hz
Brightness	250 nits
Contrast Ratio	3000:1
Color Gamut	72% NTSC
Anti-glare	Yes
Curvature	None
Camera	None
Microphone	None
Speakers	None
Power Consumption (Typical / Maximum)	15W / 17W
Power Adapter	Integrated
Touchscreen	None

Smart System

None

DESIGN

Stand	Tilt Stand
Case Color	Raven Black
Side Bezel Width	1.8 mm
Dimensions with Stand (HxWxD)	367.4x493.0x209.5 mm / 14.46x19.41x8.25 inches
Weight (Including Stand)	2.6 kg / 5.9 lbs.
Mounting	Supports VESA mount 100mm
ThinkCentre® M Series Support	Tiny, Nano Support

CONNECTIVITY

USB Port	None
Video Connector	1x HDMI® 1.4, 1x VGA
Network Connectivity	None

SERVICE

Base Warranty	3-year
----------------------	--------

CERTIFICATIONS

Environmental Certification	ENERGY STAR® Certified, EPEAT™ Gold, RoHS
Ergonomic Certification	TÜV Rheinland® Low Blue Light, TÜV Rheinland Flicker Free
Sync Technology	AMD FreeSync™

SOFTWARE

Operating System	Support Windows® 10
-------------------------	---------------------

ACCESSORIES

Video Cables	HDMI cable
---------------------	------------

MODEL

Announce Date	: 2021-05-27	EAN / UPC / JAN	: 0195890137810 / 195890137810 / None
----------------------	--------------	------------------------	---------------------------------------



Premium Care - Advanced Support from Real People. Real Fast.



REAL PERSON

Choose how you want to reach us - through the phone, chat or email - our expert technicians will take care of you.



REAL FAST

Highly trained technicians will provide you real-time solutions, whatever the issue, on your first contact. If needed, our team will schedule an onsite visit for the next business day.



HASSLE FREE

'Getting started' and 'how-to' assistance for hardware and software. Easy solutions that are simple to reach - that's how Premium Care delivers you the ideal support experience.



PC HEALTH CHECK

Free annual PC Health Check that allows our experts to spot issues before you do so they can resolve them quickly and help you avoid PC problems.

Accidental Damage Protection - Protection of your PC from the unexpected.

Experience shows that a significant portion of devices may be damaged (and not covered under warranty) in the first three years. Lenovo's Accidental Damage Protection service covers accidents beyond the system warranty such as drops, spills, bumps and even electrical surges. Make sure your new device has maximum protection, avoid unplanned costs and get peace of mind.

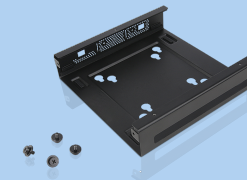
Base Warranty – Included with the systems you purchase, default 1- or 3-year coverage window.

Warranty Extensions & Upgrades – Service and protection that's right for your circumstances.

- Pick Up & Return Courier
- Onsite Support
- Technician Installed Customer
- Replaceable Unit Service
- International Warranty Upgrade

Lenovo may not offer the products, services or features discussed in this document in all regions. Lenovo may withdraw an offering at any time. Consult your local representative for information on offerings available in your area. Lenovo reserves the right to change specifications or other product information without notice. Lenovo is not responsible for photographic or typographical errors. Lenovo provides this publication "as is" without warranty of any kind, either express or implied, including the implied warranties of merchantability or fitness for a particular purpose.

Recommended Accessories



ThinkCentre Tiny VESA Mount II

4XFON03161

The ThinkCentre Tiny VESA Mount II is a unique design specific to house the Tiny PC while featuring the universal VESA mount configuration. The VESA standard enables this mount to attach to anything that is VESA comp...



Kensington MicroSaver 2.0 Cable Lock from Lenovo

4XEON80914

Protect your device. Lenovo offers the latest standard in device security – the MicroSaver 2.0 Cable Lock From Lenovo. Engineered to be the smallest, strongest lock for laptops and other devices, the MicroSaver 2.0 re...

For a full list of accessories and services, please visit:
<https://smartfind.Lenovo.com>

Lenovo

PSREF
Product Specifications
Reference