

PERFORMANCE

- Processor**
Intel® Core™ i5-10210U (4C / 8T, 1.6 / 4.2GHz, 6MB)
- Graphics**
Integrated Intel UHD Graphics
- Chipset**
Intel SoC Platform
- Memory**
1x 8GB SO-DIMM DDR4-2666
- Memory Slots**
Two DDR4 SO-DIMM slots, dual-channel capable
- Max Memory**
Up to 64GB DDR4-2666
- Storage**
256GB SSD M.2 2242 PCIe 3.0x2 NVMe
- Optane™ Memory**
None
- Storage Support**
SSD mode: one drive, 1x M.2 2280 SSD or 1x M.2 2242 SSD
- M.2 2280 SSD up to 1TB
 - M.2 2242 SSD up to 512GB
 - Optional Intel Optane Memory integrated with SSD, M.2
- Card Reader**
MicroSD Reader
- Optical**
None
- Audio Chip**
High Definition (HD) Audio, Realtek® ALC3287 codec
- Speakers**
Stereo speakers, 2W x2, Dolby® Audio™
- Camera**
720p with ThinkShutter
- Microphone**
2x, Array
- Battery**
Integrated 45Wh
- Max Battery Life**
MobileMark® 2014: 11.6 hr
MobileMark 2018: 8.56 hr
JEITA 2.0: 10.8 hr
- Power Adapter**
65W USB-C

DESIGN

- Display**
15.6" HD (1366x768) TN 220nits Anti-glare
- Touchscreen**
None
- Keyboard**
Non-backlit, Spanish (LA)
- Case Color**
Black
- Case Material**
PC + ABS (Top), PC + ABS (Bottom)
- Dimensions (WxDxH)**
366.5 x 250 x 21 mm (14.43 x 9.84 x 0.83 inches)
- Weight**
1.98 kg (4.37 lbs)

SOFTWARE

- Operating System**
None
- Bundled Software**
None

CONNECTIVITY

- Ethernet**
100/1000M
- WLAN + Bluetooth™**
Intel AX200 11ax, 2x2 + BT5.2
- WWAN**
None
- SIM Card**
None
- NFC**
None
- Standard Ports**
- 1x side docking connector
 - 1x USB-C 3.2 Gen 1 (support data transfer, Power Delivery and DisplayPort™ 1.2)
 - 1x Ethernet (RJ-45)
 - 1x USB 3.2 Gen 1
 - 1x USB 3.2 Gen 1 (Always On)
 - 1x USB-C 3.2 Gen 2 (support data transfer, Power Delivery and DisplayPort 1.2)
 - 1x HDMI® 1.4b
 - 1x headphone / microphone combo jack (3.5mm)
 - 1x microSD card reader
- Monitor Cable**
None

SECURITY & PRIVACY

- Smart Card Reader**
None
- Security Chip**
Discrete TPM 2.0
- Fingerprint Reader**
Touch Style, Match-on-Host
- Physical Locks**
Kensington® Security Slot
- Other Security**
ThinkShutter camera cover

MANAGEABILITY

- System Management**
None

SERVICE

- Base Warranty**
3-year, Depot
- Included Upgrade**
3Y Onsite upgrade from 3Y Depot/CCI (5WS0A23006)

ACCESSORIES

- Bundled Accessories**
None

CERTIFICATIONS

- Green Certifications**
- ENERGY STAR® 8.0
 - TCO
 - EPEAT™ Gold
 - RoHS compliant
- Mil-Spec Test**
MIL-STD-810G military test passed

MODEL

- | | | | |
|------------------------|----------------|-----------------------|--------------|
| TopSeller | : No | Announce Date | : 2020-10-20 |
| EAN / UPC / JAN | : 195477358744 | End of Support | : 2026-12-20 |

· Product image on this page is a sample, it may not match the real color of this model

· Battery life is an estimated maximum. Actual battery life may vary based on many factors, including screen brightness, active applications, features, power management settings, battery age and conditioning, and other customer preferences

Premier Support - A direct 24x7x365 line to our most elite technicians.



Advanced technical support, 24x7x365, in more than 100 markets



Technical Account Managers for proactive relationship and escalation management



Comprehensive hardware & OEM software support



Priority on service delivery and repair parts



Single point of contact for simplified end-to-end case management



Lenovo Service Connect Portal for customized reporting and product support

Accidental Damage Protection - Protection of your PC from the unexpected.

Experience shows that a significant portion of devices may be damaged (and not covered under warranty) in the first three years. Lenovo's Accidental Damage Protection service covers accidents beyond the system warranty such as drops, spills, bumps and even electrical surges. Make sure your new device has maximum protection, avoid unplanned costs and get peace of mind.

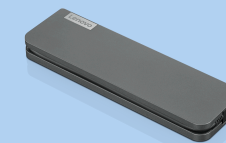
Base Warranty - Included with the systems you purchase, default 1- or 3-year coverage window.

Warranty Extensions & Upgrades - Service and protection that's right for your circumstances.

- Pick Up & Return Courier
- Onsite Support
- Technician Installed Customer
- Replaceable Unit Service
- International Warranty Upgrade

Lenovo may not offer the products, services or features discussed in this document in all regions. Lenovo may withdraw an offering at any time. Information is subject to change without notice. Consult your local representative for information on offerings available in your area. Lenovo reserves the right to change specifications or other product information without notice. Lenovo is not responsible for photographic or typographical errors. Lenovo provides this publication "as is" without warranty of any kind, either express or implied, including the implied warranties of merchantability or fitness for a particular purpose.

Recommended Accessories



Lenovo USB-C Mini Dock_US

40AG0090US

Expand Your Potential with An Universal Mini Dock; Lenovo understands that modern business depends on a wide variety of PC's and even brands to meet their business needs. To make this easier Lenovo USB-C Mini dock is ...



Lenovo 65W Standard AC Adapter (USB Type-C)- US/Can/Mex

40AU0065US

This Lenovo 65W Standard AC Adapter (USB Type-C) Power Adapter offers fast, efficient charging at home, in the office, or on the go. This power adapter is compatible with ThinkPad USB-C enabled Notebook and Tablet.

For a full list of accessories and services, please visit:
<https://smartfind.Lenovo.com>

Lenovo

PSREF
Product Specifications
Reference