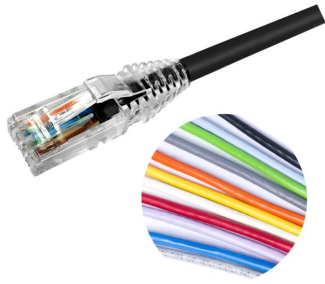


CO155D2



Category 5e U/UTP Patch Cord, RJ45 to RJ45, 4-pair, Non-Plenum

Product Classification

Regional Availability	Asia Australia/New Zealand Latin America North America
Portfolio	CommScope®
Product Type	Twisted pair patch cord
Product Series	CHD CO
Ordering Note	Cords < 1 m are valid elements for use in a channel or as an equipment interconnect but due to their limited length are not guaranteed to meet component compliance requirements that were developed to assess the quality of longer cords Cords > 1 m are authorized for use in channels and are an effective standalone method used to connect active devices

General Specifications

ANSI/TIA Category	5e
Cable Type	U/UTP (unshielded)
Conductor Type	Stranded
Interface, Connector A	RJ45 plug
Interface Feature, connector A	Standard
Interface, Connector B	RJ45 plug
Interface Feature, connector B	Standard
Jacket Color	Black Blue Green Orange Red Slate White Yellow
Pairs, quantity	4
Transmission Standards	IEEE 802.3bt Type 4
Wiring	T568B

Dimensions

Cable Assembly Length Range (m)	1 – 30
Cable Assembly Length Range (ft)	1 – 100

C0155D2

Cable Assembly Length Range (cm)	15 – 999
Cable Assembly Length Range (in)	6 – 999
Diameter Over Jacket	5.36 mm 0.211 in
Compatible Conductor Gauge, stranded	24 AWG

Wiring Diagram

	Connector A	Connector B
Position 1	White/Orange	White/Orange
Position 2	Orange	Orange
Position 3	Lt. Green	Lt. Green
Position 4	Blue	Blue
Position 5	Lt. Blue	Lt. Blue
Position 6	Green	Green
Position 7	Lt. Brown	Lt. Brown
Position 8	Brown	Brown

Electrical Specifications

dc Resistance, maximum	0.3 ohm
Safety Voltage Rating	300 V

Material Specifications

Contact Plating Material	Gold in remating area Nickel underplating
Material Type	Phosphor Bronze Polycarbonate

Mechanical Specifications

Plug Insertion Life, minimum	750 times
Plug Retention Force, minimum	133 N 29.9 lbf

Environmental Specifications

Operating Temperature	-10 °C to +60 °C (+14 °F to +140 °F)
Environmental Space	Non-plenum
Flammability Rating	CM

C0155D2

Safety Standard

ETL | cETL

Packaging and Weights

Packaging quantity

1

Regulatory Compliance/Certifications

Agency

ISO 9001:2015

Classification

Designed, manufactured and/or distributed under this quality management system

